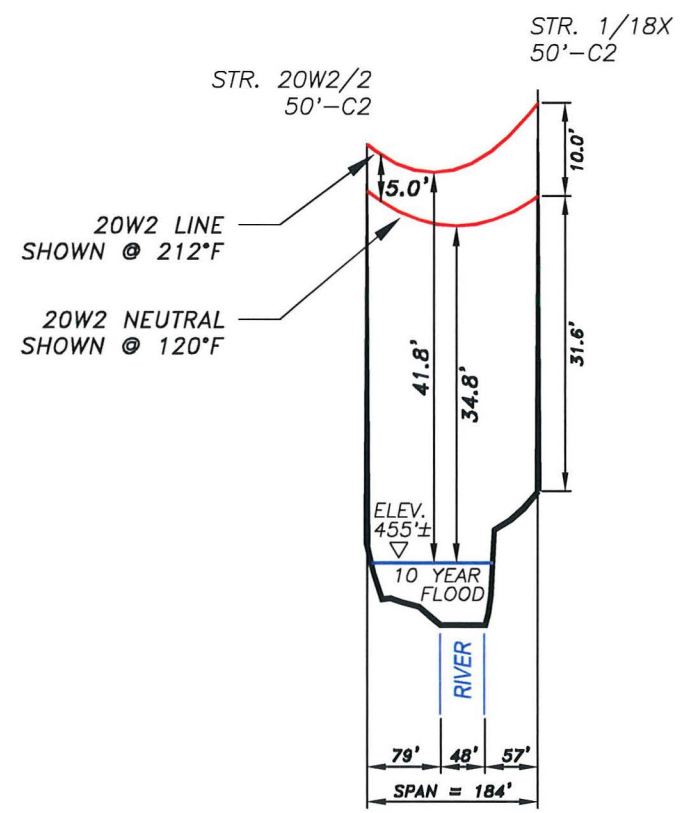


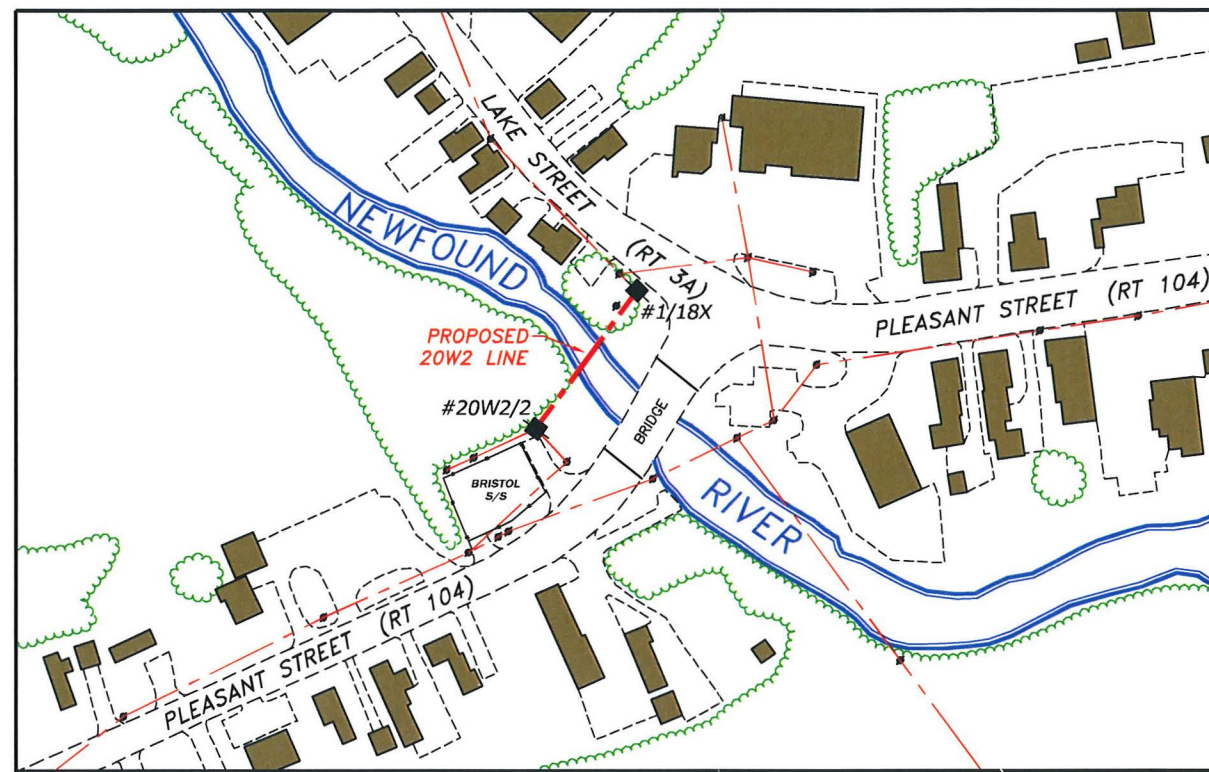
FIGURE 1

						DRAWN		Public Service				
						JWH		of New Hampshire				
						DESIGNED		System				
						DMS		Projects				
						CHECKED		<p style="text-align: center;">LOCUS MAP 20W2 LINE - 12.5KV NEWFOUND RIVER WATER CROSSING BRISTOL, NEW HAMPSHIRE</p>				
						DMS						
						APPROVED						
						DMS		SCALE	DATE	SHEET	DRAWING NO.	
								1"=2000'	03/04/2015	1 of 5	D-10256-1	
NO.	REVISION	DATE	DRWN	CHK	APPR							

THIS PLAN IS FOR REFERENCE ONLY.  
NO REPRESENTATION OR WARRANTY IS  
MADE AS TO LOCATION OF BOUNDARIES  
OR OTHER POINTS OF REFERENCE

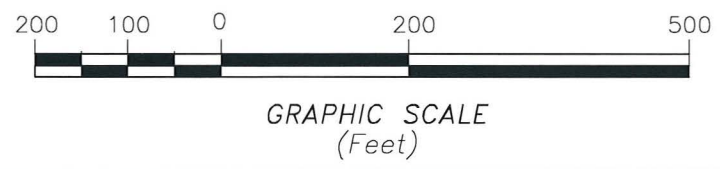


**PROFILE**  
SCALE: 1"=200' HORIZ.  
20' VERT.



**PLAN VIEW**  
SCALE: 1"=200'

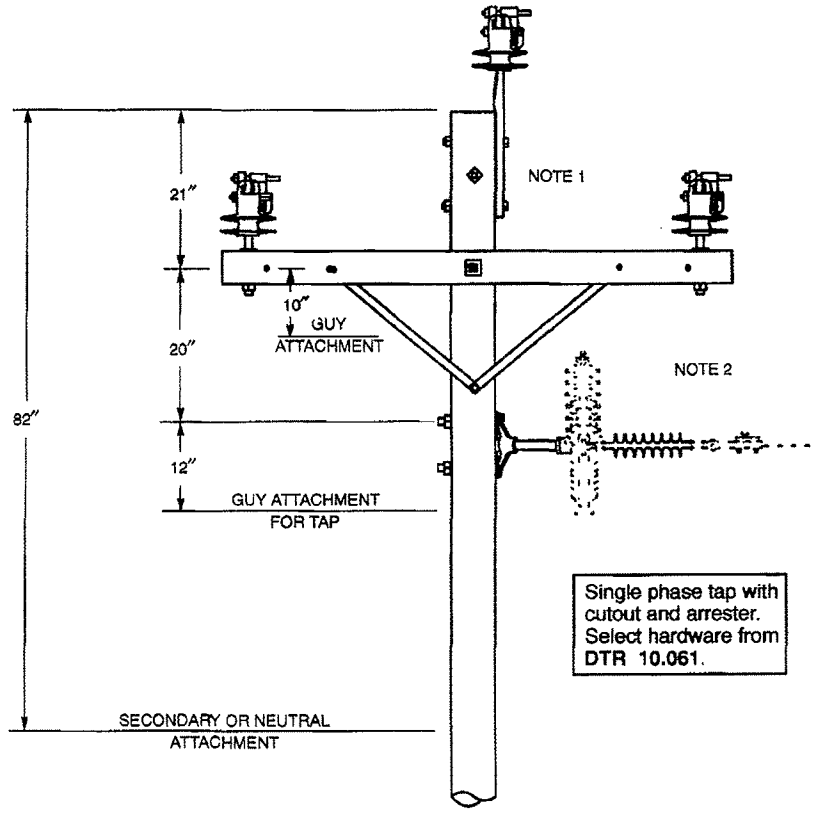
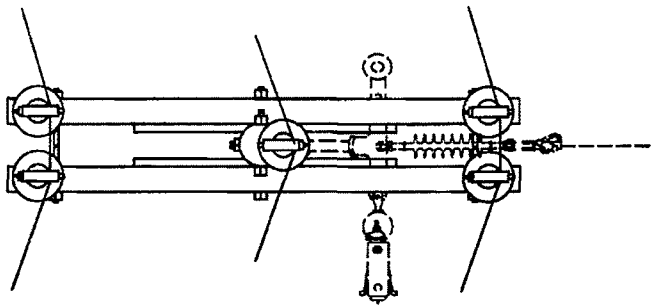
**FIGURE 2**



		Energy Delivery			
DRAWN JWH		<b>20W2 LINE (12.5KV) NEWFOUND RIVER WATER CROSSING, PLAN &amp; PROFILE BRISTOL, NEW HAMPSHIRE</b>			
DESIGNED DMS					
CHECKED DMS					
APPROVED DMS		SCALE 1"=200'	DATE 03/10/2015	SHEET 2 OF 5	DRAWING NO. D-10256-2
NO.	REVISION	DATE	DRWN	CHK	APPR

STRUCTURE LIMIT C2

Only for use where 8 or 10-foot crossarms cannot be used. Refer to **DSEM Section 06 - OVERHEAD GENERAL**.



**Notes**

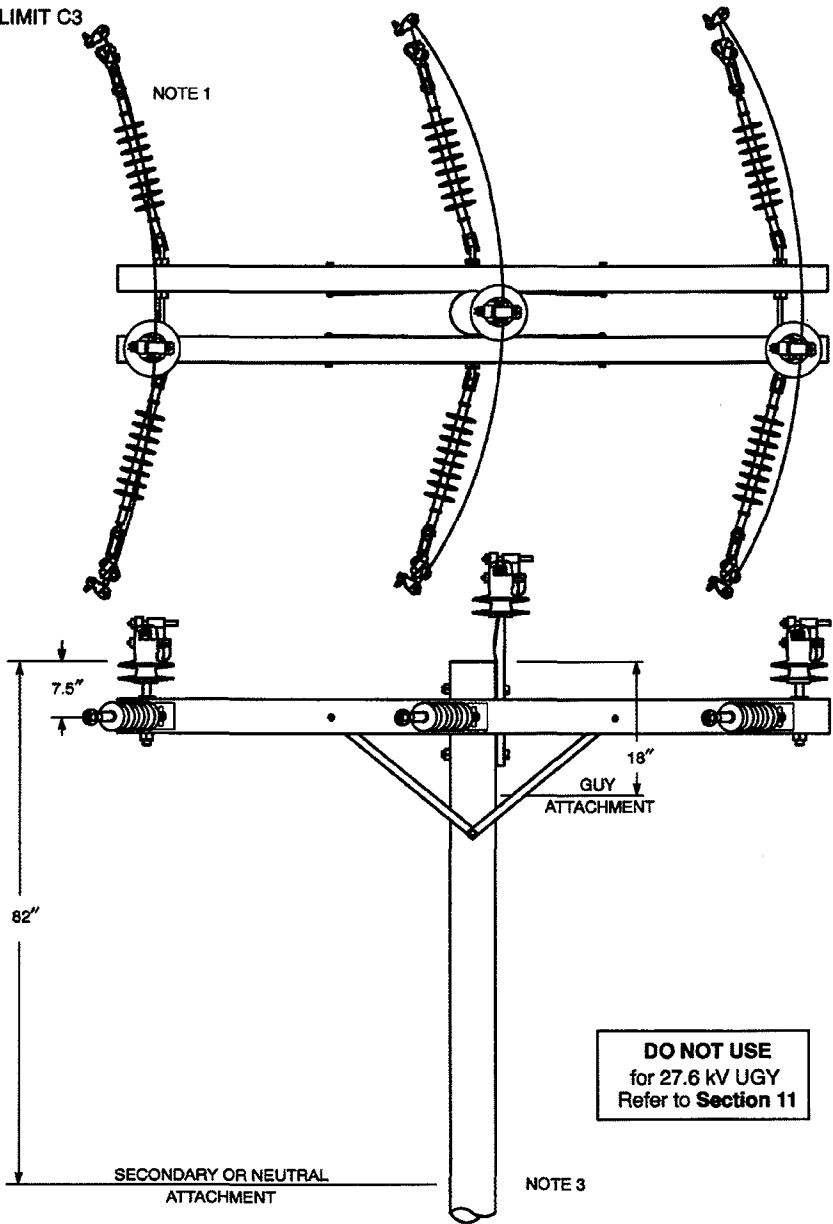
1. Install anti-split bolt. ( $5/8$ " x 10" machine bolt).
2. For taps that are not 90 degrees (perpendicular) to the mainline conductors, the clearance between the crossarm brace and the top of the cutout or arrester may be less than eight inches. For this case install eight foot crossarms per DTR 10.213 to obtain more vertical clearance.

ORIGINAL	<b>23 KV MGY AND BELOW - 5'-7" WOOD CROSSARM CONSTRUCTION</b>			
11/2/98	<b>THREE-PHASE - MEDIUM CORNER</b>			
APPROVED				
1/6/14	NORTHEAST UTILITIES	CONSTRUCTION STANDARD	DTR 10.107	3

FIGURE 3

					DRAWN		Public Service		System	
					JWH		of New Hampshire		Projects	
					DESIGNED		STRUCTURE DETAILS 20W2 LINE - 12.5KV NEWFOUND RIVER WATER CROSSING BRISTOL, NEW HAMPSHIRE			
					DMS					
					CHECKED					
					DMS		APPROVED		SCALE	
					DMS		DATE		SHEET	
							1"=2000'		03/04/2015	
							DRAWING NO.		3 of 5	
									D-10256-3	
NO.	REVISION	DATE	DRWN	CHK	APPR					

STRUCTURE LIMIT C3



**Notes**

1. Select straight strain clamps and tap wire from **Section 07**.
2. Select connectors from **Section 33**.
3. Install a guy at the secondary/neutral gain for solely owned electric company poles.

ORIGINAL	<b>35 KV MGY AND BELOW - WOOD CROSSARM CONSTRUCTION THREE-PHASE - LARGE CORNER</b>			
3/30/94				
APPROVED	NORTHEAST UTILITIES	CONSTRUCTION STANDARD	DTR 10.217	4
1/8/14 <i>Cwp</i>				

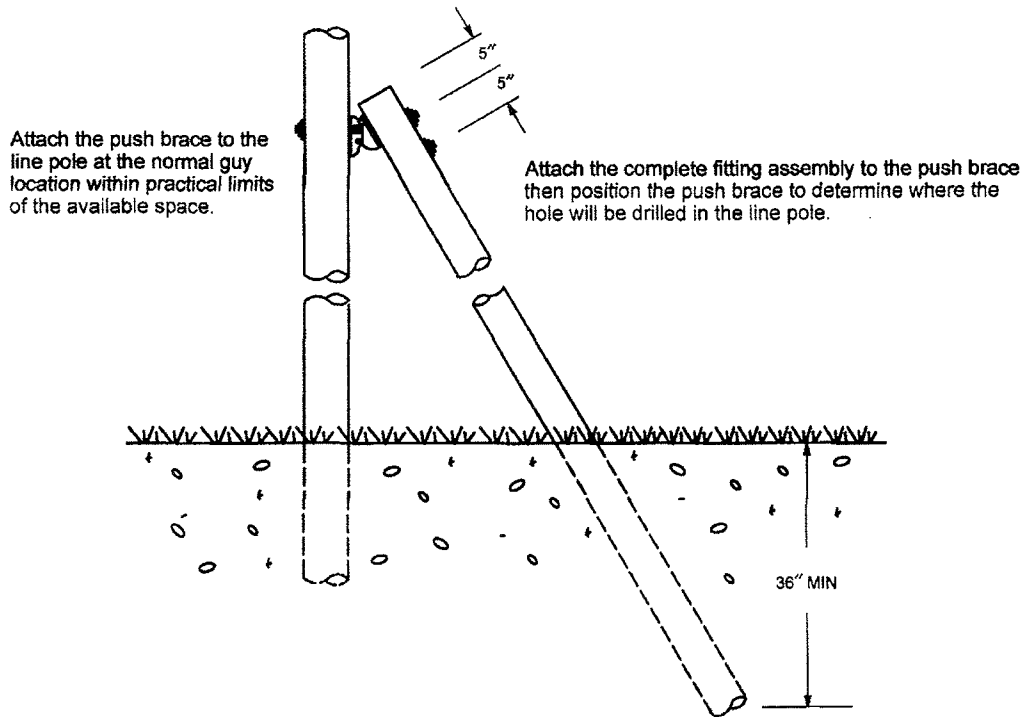
FIGURE 4

					DRAWN		Public Service		System	
					JWH		of New Hampshire		Projects	
					DESIGNED		STRUCTURE DETAILS 20W2 LINE - 12.5KV NEWFOUND RIVER WATER CROSSING BRISTOL, NEW HAMPSHIRE			
					DMS					
					CHECKED					
					DMS		APPROVED		SCALE	
					DMS		DATE		SHEET	
							03/04/2015		4 of 5	
					NO.		REVISION		DRAWING NO.	
									D-10256-4	

**APPLICATION** – Use push braces only when no other type of guy can be installed.

**PUSH BRACE POLE CLASS** – Use the guy selector to determine the guy strength required to support the pole, if an anchor guy were to be used. The **LEAD/HEIGHT** ratio must be limited to a range of .5 –1. Select the class of the push brace pole from the table below:

Length Of Push Brace	Equivalent Guy Strength Required		
	Up To 10 M	20 M	30 M
30'	5	3	2
35'	4	2	1
40'	4	1	–
45'	3	1	–



ORIGINAL	<b>PUSH BRACES</b>			
7/22/91				
APPROVED				
11/2/99	NORTHEAST UTILITIES	CONSTRUCTION STANDARD	DTR 06.181	1

*FIGURE 5*

						DRAWN		Public Service of New Hampshire		System Projects	
						JWH					
						DESIGNED		<b>STRUCTURE DETAILS</b> 20W2 LINE – 12.5KV NEWFOUND RIVER WATER CROSSING BRISTOL, NEW HAMPSHIRE			
						DMS					
						CHECKED					
						DMS		SCALE		DRAWING NO.	
						APPROVED		1" = 2000'		D-10256-5	
						DMS		DATE		SHEET	
								03/04/2015		5 of 5	
						NO.		REVISION		DATE	
						DRWN		CHCK		APPR	